

1-Line Bi-directional TVS Diode Array

APPLICATION

- ◆ Cellular Handsets and Accessories
- ◆ Personal Digital Assistants
- ◆ Notebooks and Handhelds
- ◆ Portable Instrumentation
- ◆ Digital Cameras
- ◆ Peripherals
- ◆ Audio Players
- ◆ Keypads, Side Keys, LCD Displays



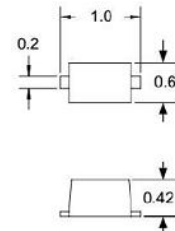
IEC COMPATIBILITY

Package: SOD-923

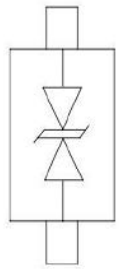
- ◆ IEC61000-4-2 (ESD) ±25kV (air), ±20kV (contact)
- ◆ IEC61000-4-5 (Lightning) 5A (8/20ns)

FEATURES

- ◆ Ultra small package: 1.0X0.6X0.4mm
- ◆ Protects one data or power line
- ◆ Working voltage: 5V
- ◆ 2-pin leadless package



Dimensions (mm)
Package Dimensions



Circuit and Pin Schematic

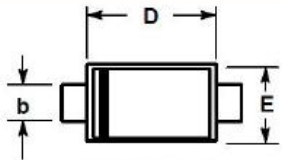
Electrical Characteristics

Parameter	Symbol	Value	Unit
Peak Pulse Power (tp=8/20µs waveform)	P _{ppp}	75	W
Peak Pulse Current (8/20µs)	I _{pp}	5	A
ESD per IEC 61000-4-2 (Air)	V _{ESD}	±25	kV
ESD per IEC 61000-4-2 (Contact)		±20	
Operating Temperature Range	T _J	-55 to +125	°C
Storage Temperature Range	T _{stg}	-55 to +150	°C

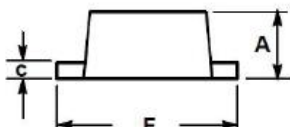
Part Number	VRWM	VBR	IR (max)	Co (pF)	Vc @1A Max	Vc @5A Max	Ppp (W)	Delivery Time (Days)
HAN0521D9	5.0	5.6	1	15	10	15	75	7days

1-Line Bi-directional TVS Diode Array

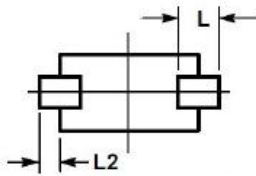
Package Mechanical Data



TOP VIEW



SIDE VIEW



BOTTOM VIEW

SYM	DIMENSIONS					
	MILLIMETERS			INCHES		
	MIN	NOM	MAX	MIN	NOM	MAX
A	0.39	0.42	0.45	0.016	0.017	0.018
b	0.15	0.20	0.25	0.006	0.008	0.010
c	0.07	0.12	0.17	0.003	0.005	0.007
D	0.75	0.80	0.85	0.030	0.032	0.034
E	0.55	0.60	0.65	0.022	0.024	0.026
F	0.95	1.00	1.05	0.038	0.040	0.042
L	0.19REF			0.007REF		
L2	0.05	0.10	0.15	0.002	0.004	0.006

Ordering Information

Part Number	Qty per Reel	Reel Size	Package	Delivery Time
HAN0521D9	8000pcs	7inch	SOD-923	7days